

Quest to Queensland's Corners

eXploring Western Queensland



14
DAYS

Departs 6 September 2022
Returns 19 September 2021

with
expedition10
Luxury tours for ten

Quest to Queensland's Corners

eXploring Western Queensland

14
DAYS

6 to 19 September 2022

Quest to Queensland's Corners

14 Days **\$6295**pp
twin/double share

Includes:

Spacious 10 seat 4X4 Touring Coach
Fully Equipped 4X4 Support Vehicle
Accommodation

- 8 nights Motel/Hotel/Cabins
- 5 nights in eXpedition10 tents with beds and linen

Meals

- 13 Breakfasts
- 13 Lunches
- 12 Dinners

All Attractions listed in itinerary (other than those stated optional)

MAXIMUM GROUP SIZE - 10

Tumble Weed in the Simpson Desert

In Australia there are 5 border corners of which 3 are attached to Queensland. Queensland's border corners are all within the south-west corner region and are all accessible by tracks, some better than others.

Join eXpedition10 on a quest to visit all 3 Queensland border corners; Poeppel Corner, Haddon Corner and Cameron Corner on this 14-day eXpedition into Outback Queensland travelling through the Simpson Desert and the Channel Country.

Day 1 Tuesday, 6 September 2022

Toowoomba to Dirranbandi

Meals LD

Our 'Quest to the West' venture sets off this morning departing Toowoomba heading to the remote outback. We won't need camels or packhorses on this eXpedition as our trusty 4X4, 10 seat bus and 4X4 support vehicle will carry more than enough provisions to keep us nourished. The early part of this journey will see a break for smoko at Goondiwindi. There are still many grain silos in the district and we will visit one that has been transformed into a work of art. The Thallon Silo's are now famous with thousands visiting each year. From Thallon, travel to the Dirranbandi region, now a major cotton producing area with huge land holdings like Cubby Station just a stone throw away.

Accommodation Dirranbandi Motel

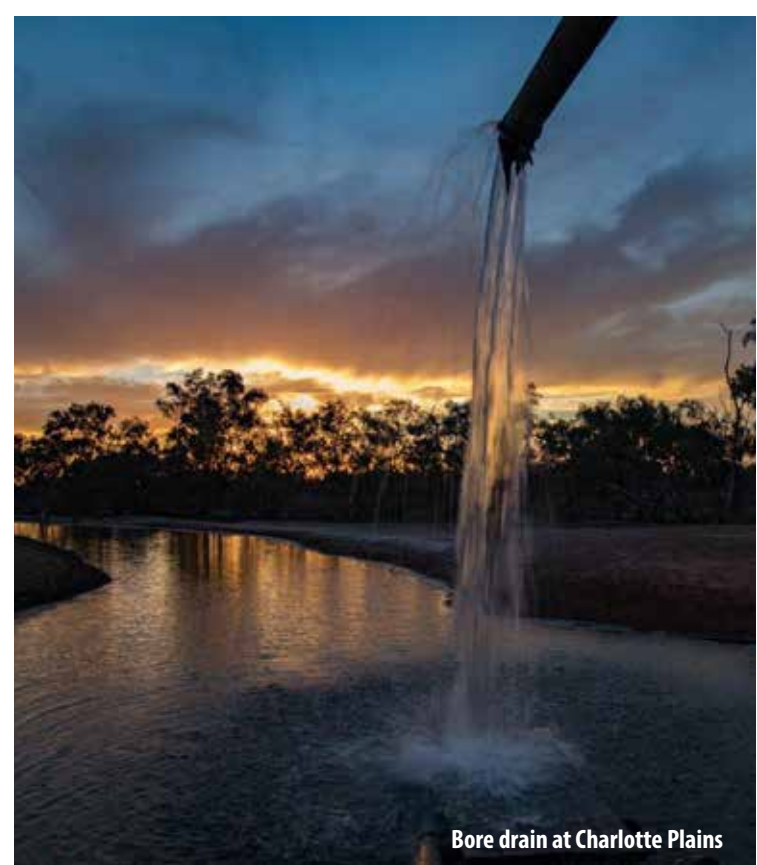
Day 2 Wednesday, 7 September 2022

Dirranbandi to Charlotte Plains

Meals BLD

Travelling north this morning, arrive in Bollon where we have an appointment with a local guide Bill Speedy. During our cultural walking tour along the banks of Wallam Creek we will learn how to track animals, find bush medicine and discover traditional scar trees. Bill's entertaining and educational tours introduce you to First Nations culture and some local history, finishing with a gourmet bush tucker tasting. Wave Bill farewell as we head to Charlotte Plains Station, famous for its warm mineral baths – home for the night.

Accommodation - eXpedition10 roomy tents with beds and linen



Bore drain at Charlotte Plains

Day 3 Thursday, 8 September 2022

Charlotte Plains to Noccundra

Meals BLD

It will be hard to drag ourselves away from this lovely place but we must continue. Visit the Cunnumulla Fella in Cunnumulla then take a short drive to Eulo, famous for its hot mud spa's and Eulo Queen Hotel. While looking around town, keep an eye open for the WWII bomb shelter. Next we we travel to Thargomindah. Did you know that Thargomindah is home to Australia's first hydro-electricity scheme? A generator was run using pressure from the town bore, providing power for lighting. Although the power plant has ceased operating commercially, the bore is still the water supply for the town. Dating back to the late 1800's, Noccundra pub is built from sandstone quarried 260 kilometres south at Milparinka. Noccundra is where we will be staying tonight in cabin accommodation. Just over the road is the Wilson River. Well worth taking the stroll across to check out the beautiful waterhole.

Accommodation – Noccundra Hotel Cabins

Day 4 Friday, 9 September 2022

Noccundra to Cameron Corner

Meals BLD

From Noccundra, our journey is via some real outback roads and station tracks crossing vast cattle stations and oil fields such as Santos, Epsilon and Omicron. Tonight we will be staying in cabins (still in Queensland) at Cameron Corner.

Accommodation – Cameron Corner Cabins

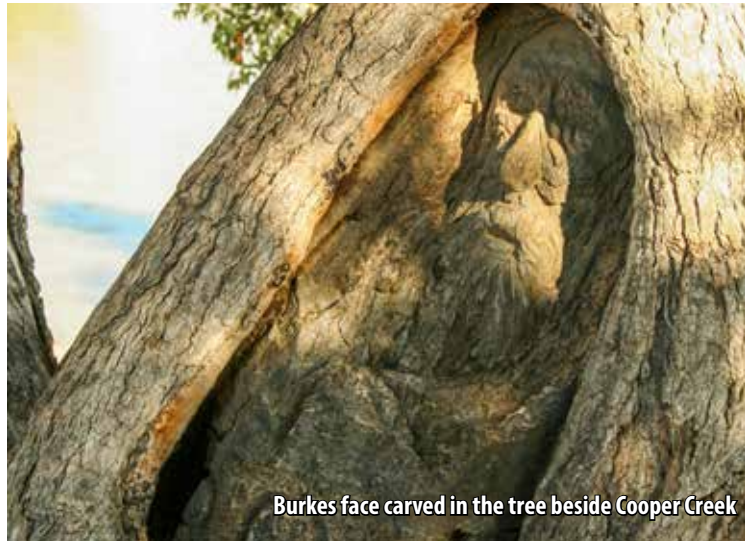
Day 5 Saturday, 10 September 2022

Cameron Corner to Dig Tree

Meals BLD

Most of the tracks covered today are used by workers on the Strzelecki Oil and Gas Fields of the Cooper Basin. The Cooper Basin has been an important part of oil and gas production since the mid 1900's. The main refinery is located in South Australia at Moomba. Tonights camp will be set up the Dig Tree beside Cooper Creek, near where Burke and Wills perished.

Accommodation – eXpedition10 roomy tents with beds and linen



Burkes face carved in the tree beside Cooper Creek



The Dig Tree near Innamincka

Day 6 Sunday, 11 September 2022

Dig Tree to Birdsville

Meals BL

Our journey heads pretty much north from the Dig Tree along sand dune ridges dotted with spinifex and scrubby wattle, until we reach Haddon Corner, our next corner visit. At Haddon Corner, Queensland shares a border with South Australia. Named by Augustus Poeppel, the surveyor who also marked the third corner we will visit - Poeppel Corner. Haddon Corner is named after the property on which it is located - Haddon Downs. Our adventure will now take a western turn as we travel toward Birdsville.

Accommodation Birdsville Lodge

Day 7 Monday, 12 September 2022

Birdsville to Simpson Desert Camp

Meals BLD

It's time now to get serious about this eXpedition with some real 4X4ing. Today we enter the Simpson Desert. The track crosses a huge sand dune known simply as 'Big Red' followed by hundreds more – not so big. Continue into the Simpson Desert National park before setting up our remote camp right in the heart of the desert.

Tonight is our first remote camp with no constructed facilities, however, we have brought some with us including shower and toilet. Accommodation – eXpedition10 roomy tents with beds and linen

Day 8 Tuesday, 13 September 2022

To Poeppel Corner and Back

Meals BLD

Today we are bound for our final Queensland 'corner' – Poeppel Corner. Continuing west, cross more sand dunes then vast dry lake beds and finally arrive at the intersection of Queensland, Northern Territory and South Australia. Enjoy some time at Poeppel Corner before returning to camp for another night under a vast desert starry sky.

Accommodation – eXpedition10 roomy tents with beds and linen



Sand dune in the Simpson Desert



Doing the Eagle Rock



Poeppel Corner Post

Day 9 Wednesday, 14 September 2022

Simpson Desert to Birdsville

Meals BLD

Follow the same road back from the desert to Birdsville leaving Big Red our final barrier to exit the Simpson Desert. Arrive back in Birdsville with time to wander through the streets and catch up with some locals at the pub.

Accommodation Birdsville Lodge

Day 10 Thursday, 15 September 2022

Birdsville to Windorah

Meals BLD

Leaving Birdsville behind us this morning, travel back toward Betoota. We are right on the fringe of Sturt's Stony Desert littered with seemingly endless plains of gibber stones. In Betoota, visit the Betoota Pub to catch up with some locals who call this desolate region home. This old pub has just been reopened after being closed for many years. A little east of Betoota, pause at Deon's Lookout to take in the magnificent view, then visit the old JC Ruins for a leg stretch before arriving in Windorah.

Accommodation Windorah Hotel

Day 11 Friday, 16 September 2022

Windorah to The Lake

Meals BLD

Departing Windorah we will cross the Cooper Creek again entering the Cooper Basin, from which flood waters flow into Lake Eyre. It is also an area known for producing fossil fuels and fossilised prehistoric creatures. Dinosaur fossils were unearthed near Eromanga recently so we will detour slightly from our route to learn some more about this at the Eromanga Natural History Museum. The Lake, just east of Quilpie. We have arranged sleeping quarters here for tonight beside this magnificent waterhole.

Accommodation – The Lake Cabins with shared facilities

Day 12 Saturday, 17 September 2022

The Lake to Morven

Meals BLD

From The Lake, continuing eastbound, pass through huge tracts of mulga country and tiny former railway settlement before arriving in Charleville. Charleville is known as the 'Gateway to the Outback' and it really is the last place to stock up supplies before heading into the 'unknown'. It is also home to the RFDS base at the historic airport as well as the School of the Air. We will take some time from our travels here to look around town before travelling a little further east to Morven. We will set up camp for the last time at Gidgee Bush camp. Sitting around the campfire we will learn the plight and stories of fellow explorers through this region.

Accommodation – eXpedition10 roomy tents with beds and linen

Day 13 Sunday, 18 September 2022

Morven to Surat

Meals BLD

Pause our travel east at Mitchell to visit the Mitchell Spa then detour south through some very interesting bush tracks finally reaching Surat. Our accommodation tonight is with an 'old mate', Doug at the Surat Motel. Doug is always up for a yarn over drop of the red.

Accommodation Surat Motel

Day 14 Monday, 19 September 2022

Surat to Toowoomba

Meals B

Today may be the last day of travel for the tour but we haven't finished eXploring - yet! Still a few things on the list to do yet; visit the Cobb & Co corduroy's, cross the Condamine, travel by the Coopers Gap Wind Farm and go nuts in the Bunya's.

Thank you for travelling with eXpedition10. Looking forward to sharing another eXciting adventure with you soon.



Cameron Corner - in QLD in NSW or SA??



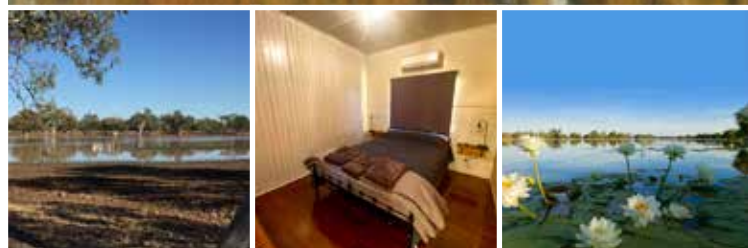
Historic Noccundra Pub



The Lake - Quilpie



Boiling water spilling from the bore at Birdsville



Iconic Birdsville Hotel



Curly red bark of the mineritchie - red mulga - *Acacia cyperophylla*

expedition10

Luxury tours for ten



X10

For Bookings or Enquiries
Ph: 1800 673 337
Email: explore@expedition10.com.au